

MONTHLY MEMBERSHIP PROGRESS REPORT

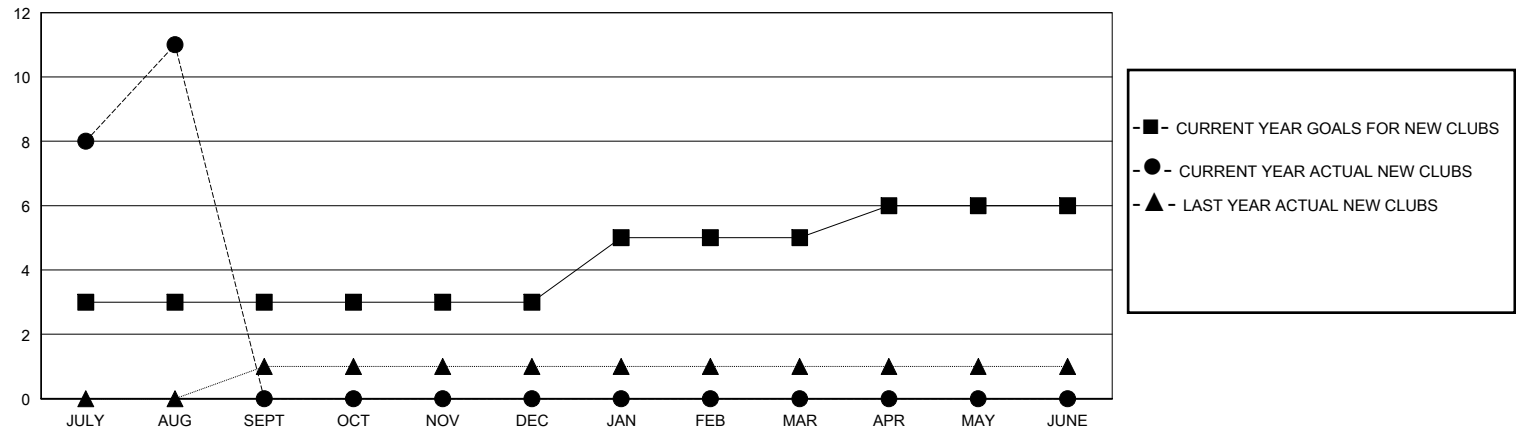
District 317 C

Results as of: 8/31/2025

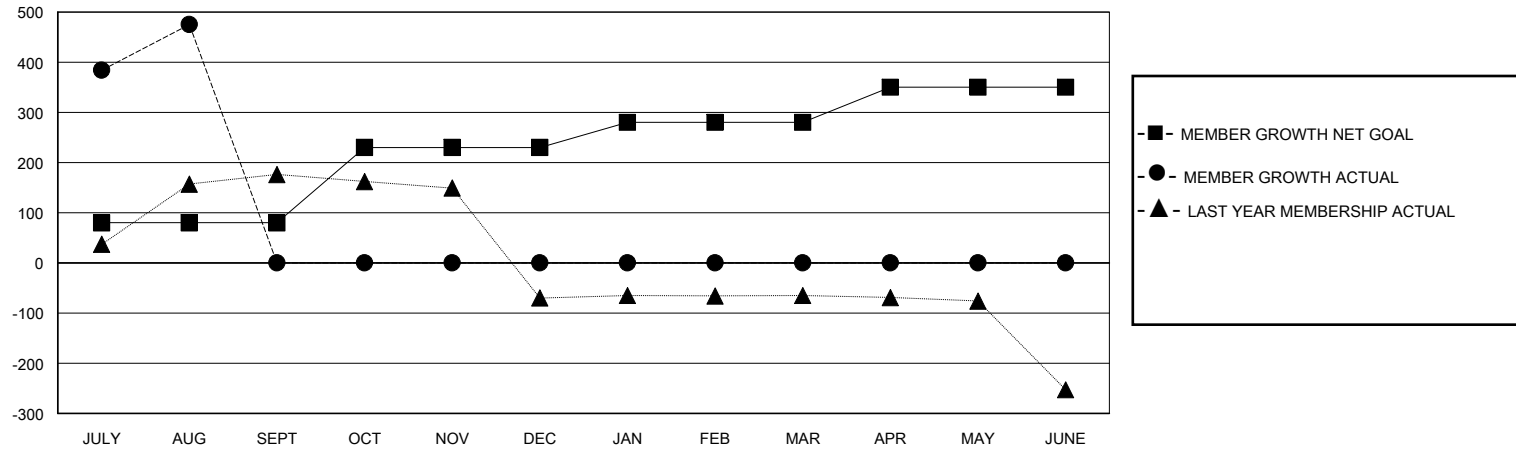
| GMT: LOCATION INDIA GMT CA |               |           |               |
|----------------------------|---------------|-----------|---------------|
| Clubs                      |               |           |               |
| RESULTS FOR 2025-2026      |               |           |               |
| QUARTER                    | NEW CLUB GOAL | NEW CLUBS | DROPPED CLUBS |
| JULY/AUG/SEPT              | 3             | 11        | 0             |
| OCT/NOV/DEC                | 0             | 0         | 0             |
| JAN/FEB/MAR                | 2             | 0         | 0             |
| APR/MAY/JUNE               | 1             | 0         | 0             |

| Members               |                        |                      |  |
|-----------------------|------------------------|----------------------|--|
| RESULTS FOR 2025-2026 |                        |                      |  |
| QUARTER               | MEMBER GROWTH NET GOAL | MEMBER GROWTH ACTUAL | DROPPED MEMBERS ACTUAL (including transfers) |
| JULY/AUG/SEPT         | 80                     | 511                  | 29   |
| OCT/NOV/DEC           | 150                    | 0                    | 0  |
| JAN/FEB/MAR           | 50                     | 0                    | 0  |
| APR/MAY/JUNE          | 70                     | 0                    | 0  |

GOALS AND ACTUAL NEW CLUBS CUMULATIVE



GOALS AND ACTUAL MEMBERS CUMULATIVE



|                        |    |   |                                     |                |
|------------------------|----|---|-------------------------------------|----------------|
| DROPPED CLUBS: 0       |    | 53 CLUBS OF 114 ADDED 1 OR MORE NEW MEMBERS               | <u>GENDER DISTRIBUTION</u>          |                |
|                        |    |   | MALE                                | 2,600 (79.83%) |
|                        |    |   | FEMALE                              | 657 (20.17%)   |
| <u>DROPPED MEMBERS</u> |    | <a href="#">CLICK HERE FOR CUMULATIVE MEMBERSHIP DATA</a> |                                     |                |
| DECEASED               | 2  |   | TOTAL FAMILY UNIT MEMBERS 1,178     |                |
| CLUB CANCELLED         | 0  |   |                                     |                |
| OTHER                  | 27 |   | FAMILY MEMBERS PAYING HALF DUES 658 |                |
| TOTAL                  | 29 |   |                                     |                |